

Charts

Chart 1: Benign and Borderline Intracranial and CNS Tumors Chart

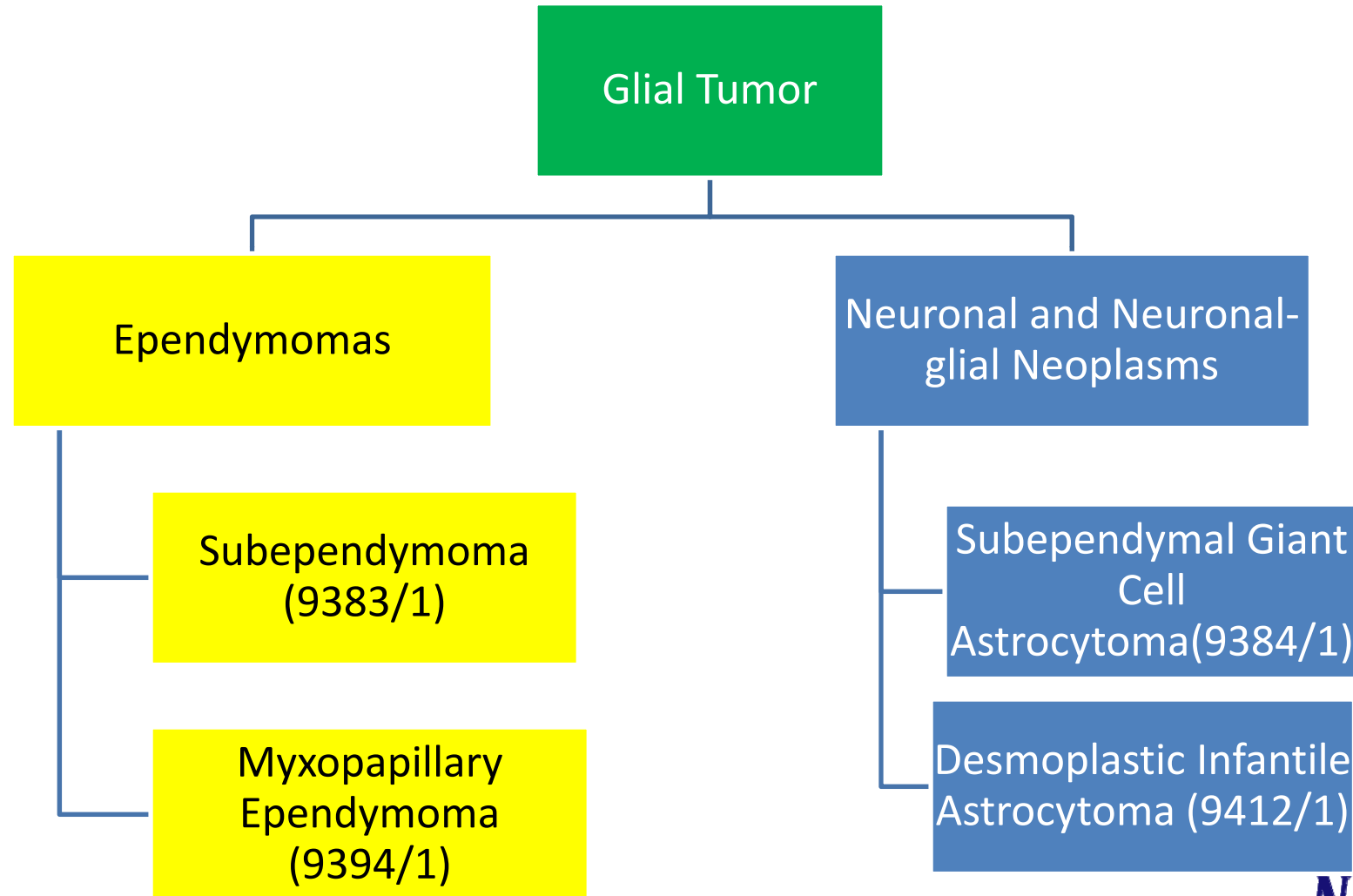


Chart 1: Benign and Borderline Intracranial and CNS Tumors Chart

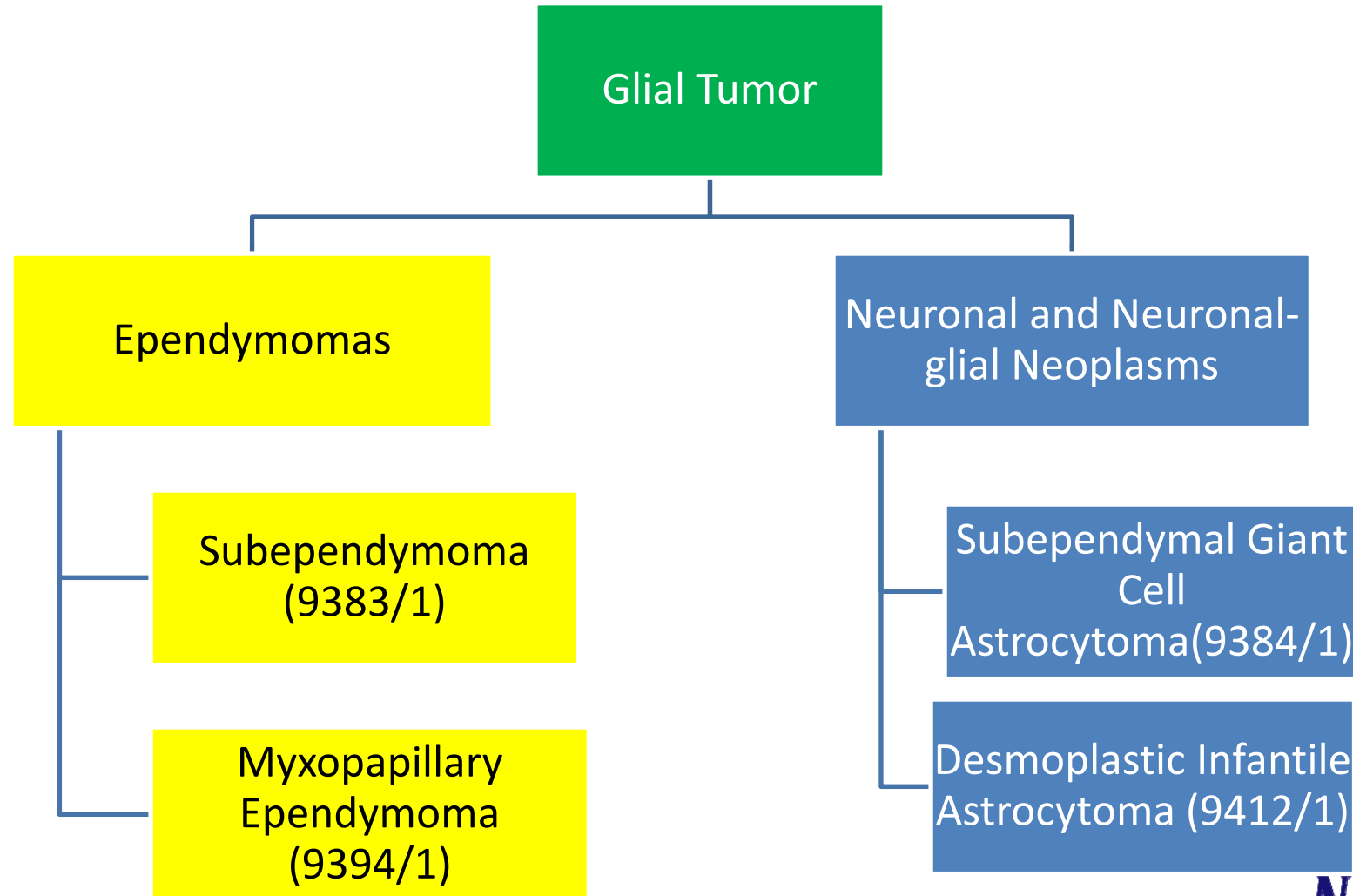


Chart Instructions: Use this chart to code histology. The tree is arranged in descending order. Each branch is a histology group, starting at the top with the least specific terms and descending into more specific terms.

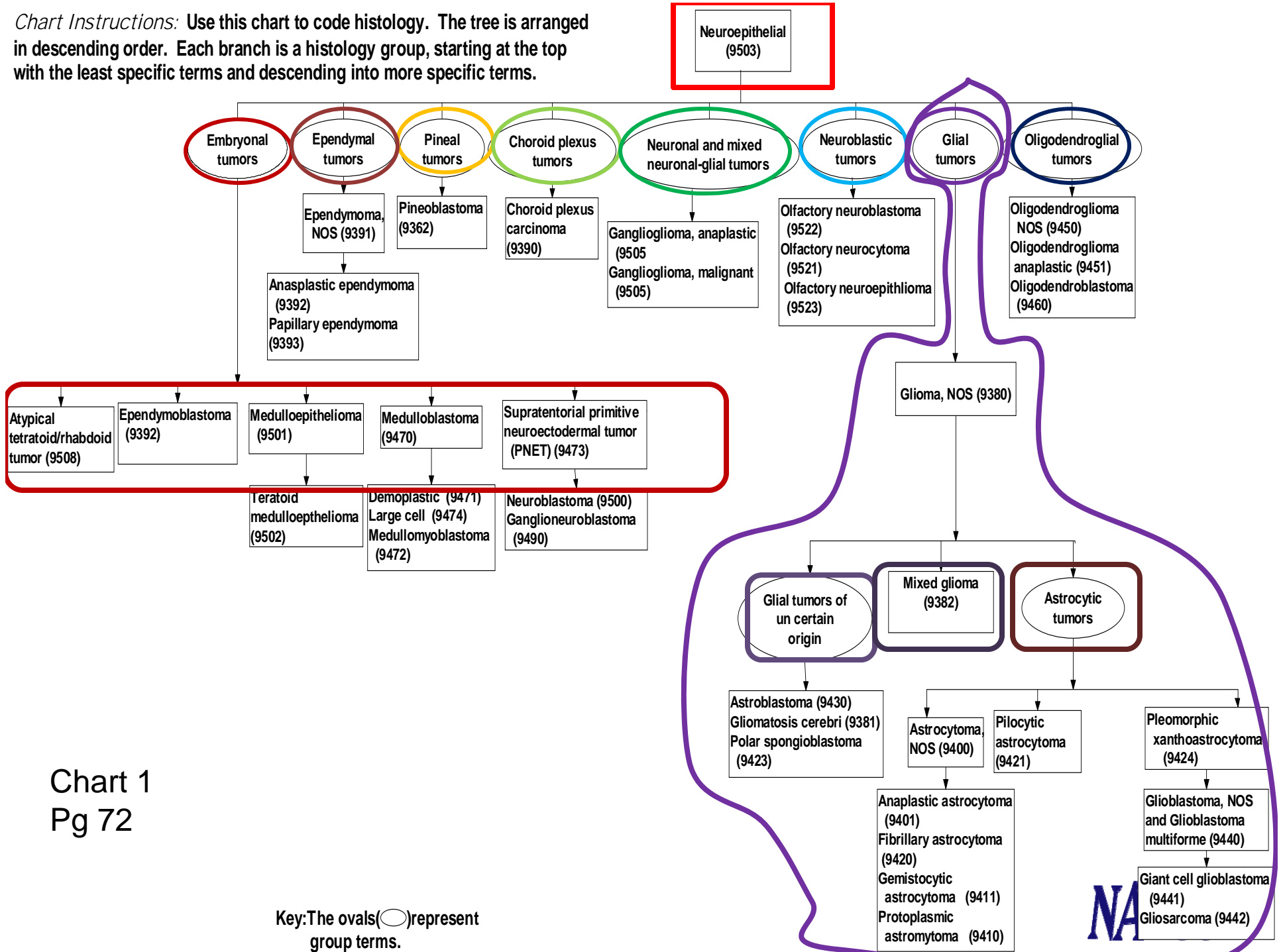


Chart 1
Pg 72

Key: The ovals (○) represent group terms.

NA

Chart 2 – Non-neuroepithelial Malignant Brain and Central Nervous System Tumors

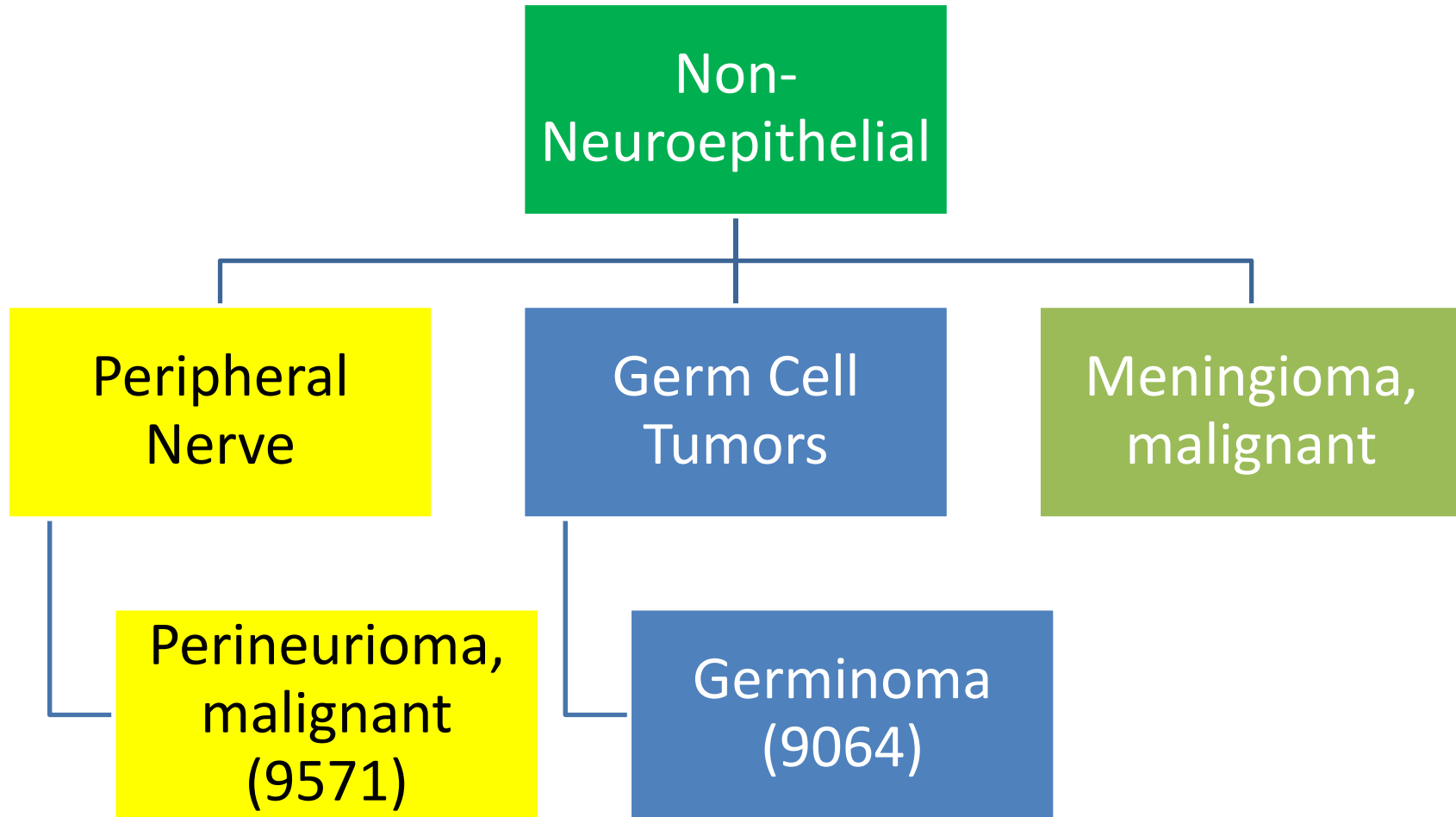
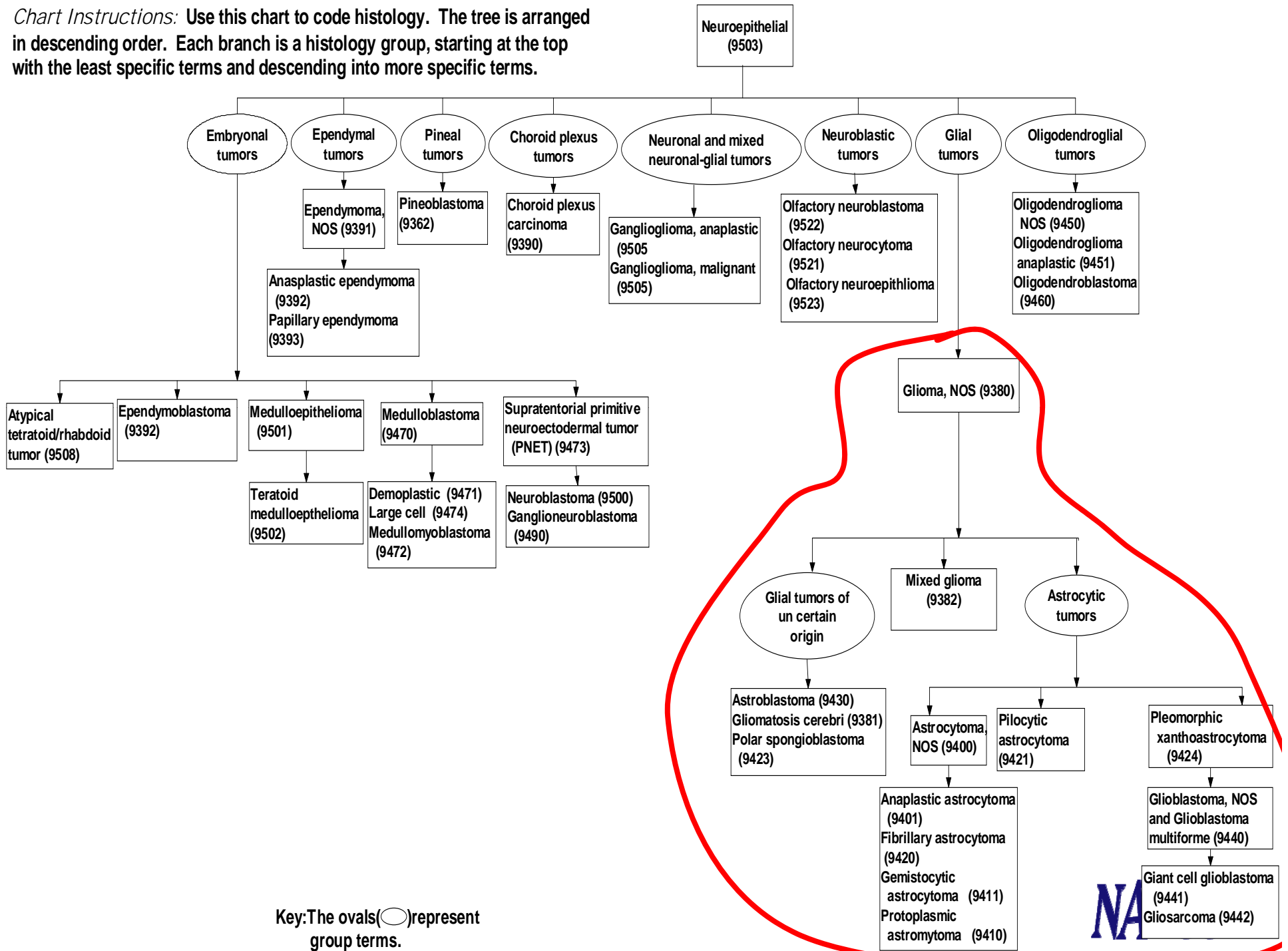
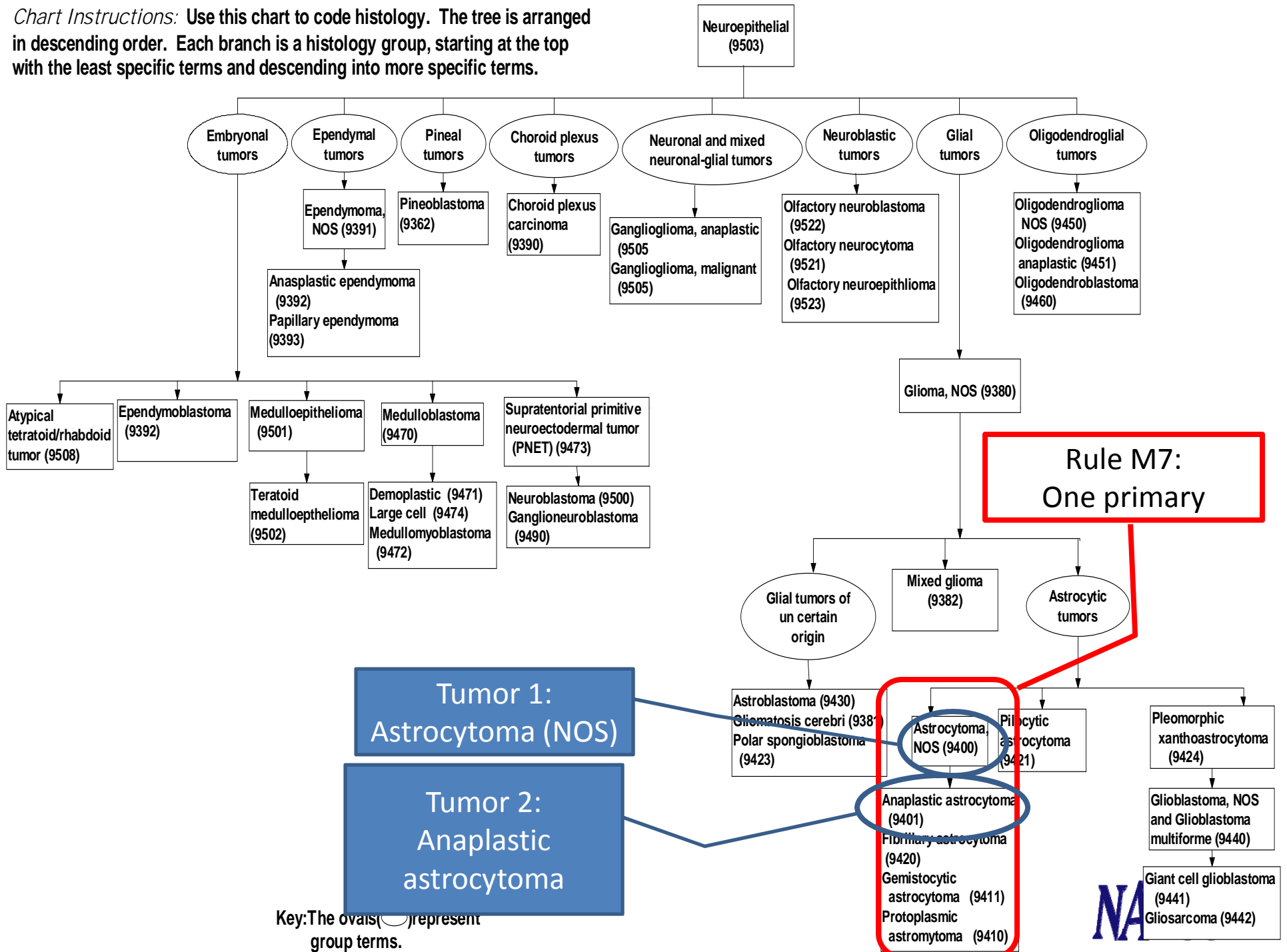


Chart Instructions: Use this chart to code histology. The tree is arranged in descending order. Each branch is a histology group, starting at the top with the least specific terms and descending into more specific terms.



NA

Chart Instructions: Use this chart to code histology. The tree is arranged in descending order. Each branch is a histology group, starting at the top with the least specific terms and descending into more specific terms.



Key: The ovals () represent group terms.

NA

Chart Instructions: Use this chart to code histology. The tree is arranged in descending order. Each branch is a histology group, starting at the top with the least specific terms and descending into more specific terms.

